



District Scale **Gold** Exploration

Newfoundland, Canada



Forward Looking Statements & Disclosures

TSX:CTM

This presentation was prepared by management of Canterra Minerals Corporation (“Canterra” or the “Company”). The information contained in this presentation (a) is provided as at the date hereof, (b) does not purport to contain all the information that may be necessary or desirable to fully and accurately evaluate an investment in Canterra, and (c) is not to be considered as a recommendation by Canterra that any person make an investment.

Canterra cautions all statements (including any oral commentary that may accompany this presentation), other than statements of historical facts, contained in this presentation and attributes of the Wilding Lake project; the business and operations of the Company, including future results of operations or financial condition, prospects, business strategy and plans and objectives of management for future operations, and other prospective transactions and their terms disclosed herein and the pro forma details of the Company post-closing of all prospective transactions, are forward-looking statements.

The words “believe,” “will,” “may,” “estimate,” “continue,” “projection”, “anticipate,” “intend,” “should,” “plan,” “expect,” “predict,” “could,” “potentially” or other similar expressions are intended to identify forward-looking statements, although not all forward- looking statements contain these identifying words.

Actual results and trends in the future may differ materially from those suggested or implied by the forward-looking statements depending on a variety of factors, including market prices, potential environmental issues or liabilities associated with exploration, development and mining activities, exploration and exploitation successes, continuity of mineralization, uncertainties related to the ability to obtain necessary regulatory approvals, permits, licenses and title and delays due to third party opposition, changes in and the effect government policies regarding mining and natural resource exploration and exploitation, continued availability of capital and financing, ongoing COVID-19 pandemic and general economic, market or business conditions. The forward-looking statements contained in this presentation speak only as of the date the statements are made and are based on information available to the Canterra at the time those statements are made and/or management’s good faith belief as of that time with respect to future events. Such statements are based upon the current beliefs and expectations of Canterra’s management and are subject to significant business, social, economic, political, regulatory, competitive and other risks, uncertainties, contingencies and other factors. Many assumptions are based on factors and events that are not within the control of Canterra. Actual future results may differ materially from historical results or current expectations.

These risks, uncertainties and assumptions could adversely affect the outcome and financial effects of the plans and events described herein. In addition, even if the outcome and financial effects of the plans and events described herein are consistent with the forward-looking information contained in this presentation, those results or developments may not be indicative of results or developments in subsequent periods. Although Canterra has attempted to identify important risks and factors that could cause actual actions, events or results to differ materially from those described in forward-looking information, there may be other factors and risks that cause actions, events or results not to be as anticipated, estimated or intended. Forward-looking information contained in this presentation is based on Canterra’s current estimates, expectations and projections, which Canterra believes are reasonable as of the current date. Canterra can give no assurance that these estimates, expectations and projections will prove to have been correct. You should not place undue reliance on forward-looking information, which is based on the information available as of the date of this presentation. Forward-looking information contained in this presentation is as of the date of this presentation and, except as required by applicable law, the Company assumes no obligation to update or revise them to reflect new events or circumstances. Historical statements should not be taken as a representation that such trends will be replicated in the future. No statement in this presentation is intended to be nor may be construed as a profit forecast. Additional information related to Canterra, including risks and uncertainties, can be found on its SEDAR profile at www.sedar.com.

The technical information contained in this corporate presentation has been reviewed and approved by Christopher Pennimpe, P.Geol. and President & CEO of Canterra Minerals Corporation. Mr. Pennimpe is a “Qualified Person” as defined by National Instrument 43-101, Standards of Disclosure for Mineral Projects.

Management and Board of Directors



Chris Pennimpede, P.Geo
CEO and Director

- 15 years of exploration experience
- VP Corporate Development at Contact Gold
- Operations Manager CSA Global
- Smash Minerals/Prosperity Goldfields/Northern Empire



Paul Moore, P.Geo, M.Sc
VP Exploration

- More than 30 years of exploration experience focused in Eastern Canada
- Former Senior Geologist at Teck Corporation and Anglo American



Harry Chan, CPA, CGA
CFO

- 20 years experience in corporate transactions, public markets and in-depth accounting and auditing
- Experience ranging from mineral exploration, development, sports entertainment, wholesale distribution and telecommunications



Andrew Farncomb, B. Comm
Director and Chairman

- Founder and Managing Partner of Cairn Merchant Partners LP
- Former Partner at Paradigm Capital Inc.
- Director at Contact Gold and Northern Superior Resources



Nicklas Coleman, B.Comm
Director

- Founder and Co-Owner of Coleman Brothers Investments
- Former VP, Director and Investment Counsellor – BMO Private Banking
- Honors Bachelor of Commerce, Smith School of Business at Queens University



Josh Serfass
Director

- Executive Vice President of Corporate Development Integra Resources Corp.
- Former Manager of Corporate Communications at Integra Gold Corp; sold to Eldorado Gold for \$600M in 2017



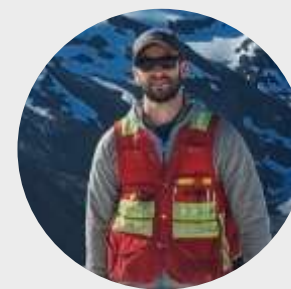
Michael Power, P.Eng,CFA
Director

- 50 years of experience in the mining industry
- Director at Greencastle Resources Ltd
- Former VP at Hemlo and Noranda



David J. Butler, P.Geo
Exploration Manager

- More than 30 years of exploration experience, primarily in Newfoundland-based VMS assets
- Board Member, Professional Engineers and Geoscientists of Newfoundland and Labrador



Konrad Chrzastowski, P.Geo, M.Sc
Project Geologist

- Exploration experience across multiple deposit types from Diamonds to Porphyry Copper across Canada and the USA
- Masters focused on platinum/palladium ore deposits – Stillwater complex, Montana

Capital Structure ¹

Basic Shares Outstanding

Canterra Shares Outstanding	<i>M</i>	148.8
Shares Outstanding	<i>M</i>	148.8

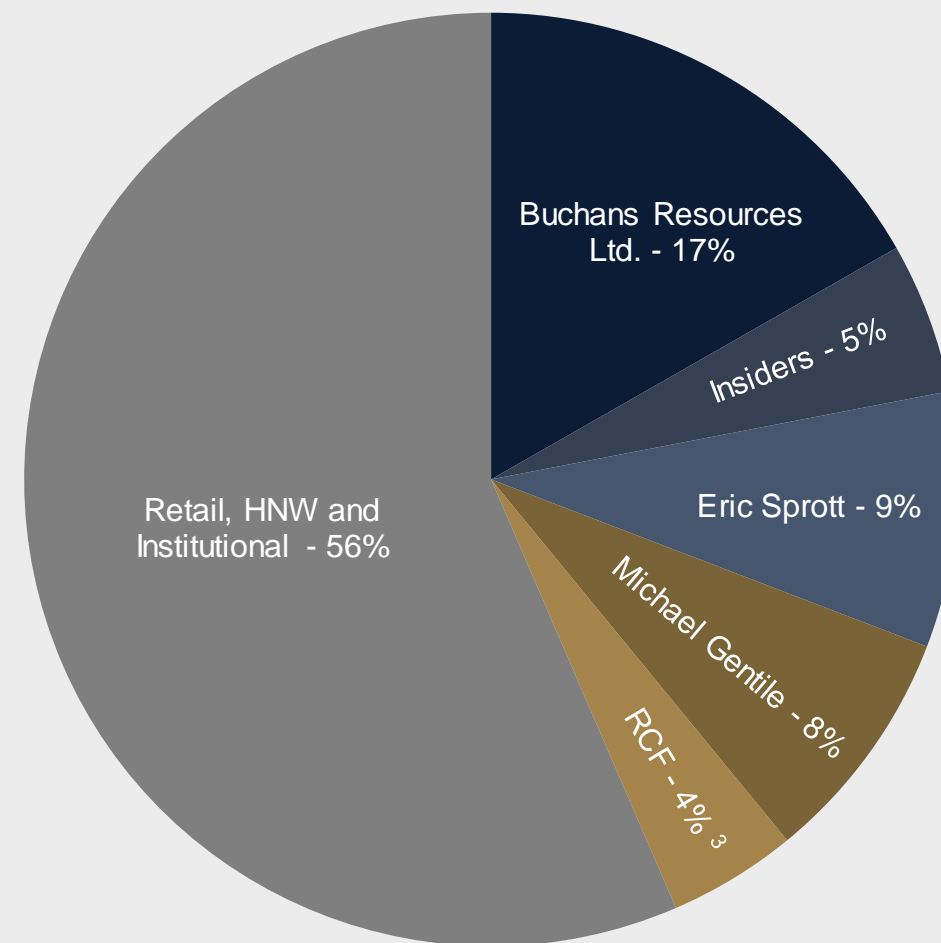
Partially Diluted Shares Outstanding

Shares Outstanding	<i>M</i>	148.8
Consideration Warrants ²	<i>M</i>	125.5
Partially Diluted Shares Outstanding	<i>M</i>	274.3

Fully Diluted Shares Outstanding

Partially Diluted Shares Outstanding	<i>M</i>	274.3
Options - Expiry	Strike	# mm
2026-03-19	\$0.34	1.9
2026-10-18	\$0.31	2.1
2028-05-11	\$0.07	3.0
2028-06-07	\$0.07	0.3
Total Options	\$0.21	7.2
Warrants - Expiry		
2028-04-24	\$0.08	20.8
2025-12-21	\$0.07	1.3
Total Warrants	\$0.07	22.0
Fully Diluted Shares Outstanding	<i>M</i>	303.5

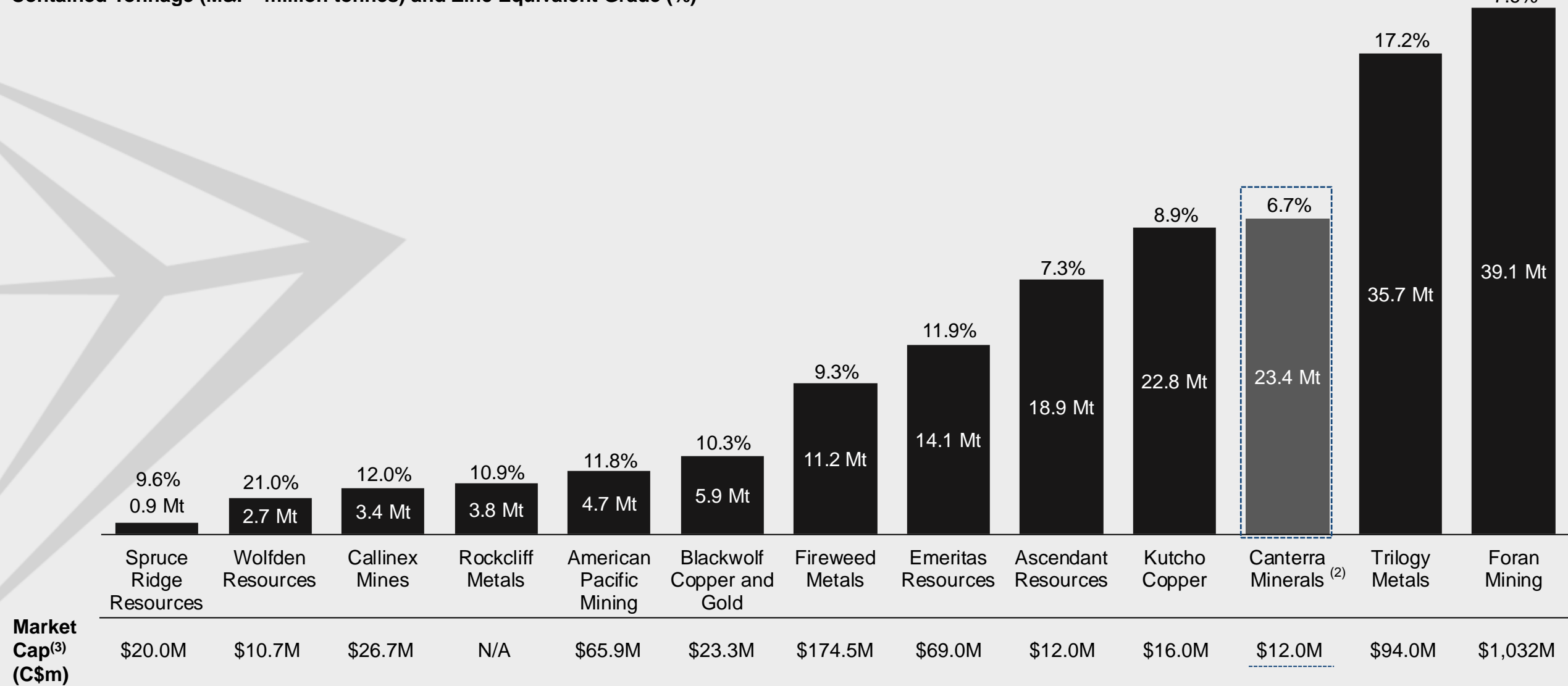
Basic Share Ownership



1: As at December 31st 2023, 2: Warrants to convert to shares of Canterra for no additional consideration upon Buchans Resources completing a distribution of shares issuable under warrants to Buchans shareholders, 3: Held through an RCF portfolio company

Comparable VMS Explorers and Developers

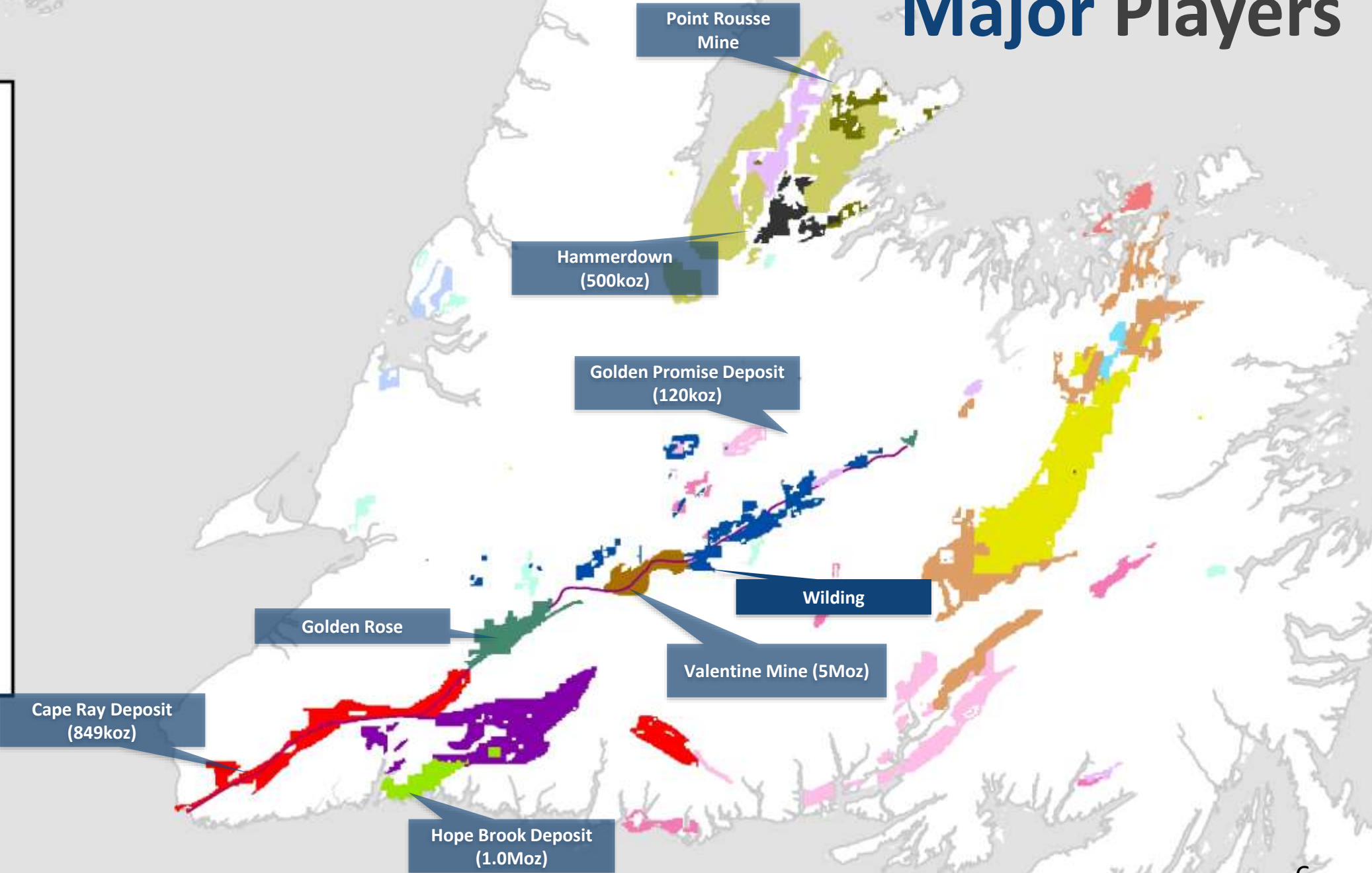
Contained Tonnage (M&I – million tonnes) and Zinc Equivalent Grade (%) ⁽¹⁾



1) See Resource Disclosures – 2) Undiluted - 3) Market cap pulled from CapitalIQ as of January 11th, 2024

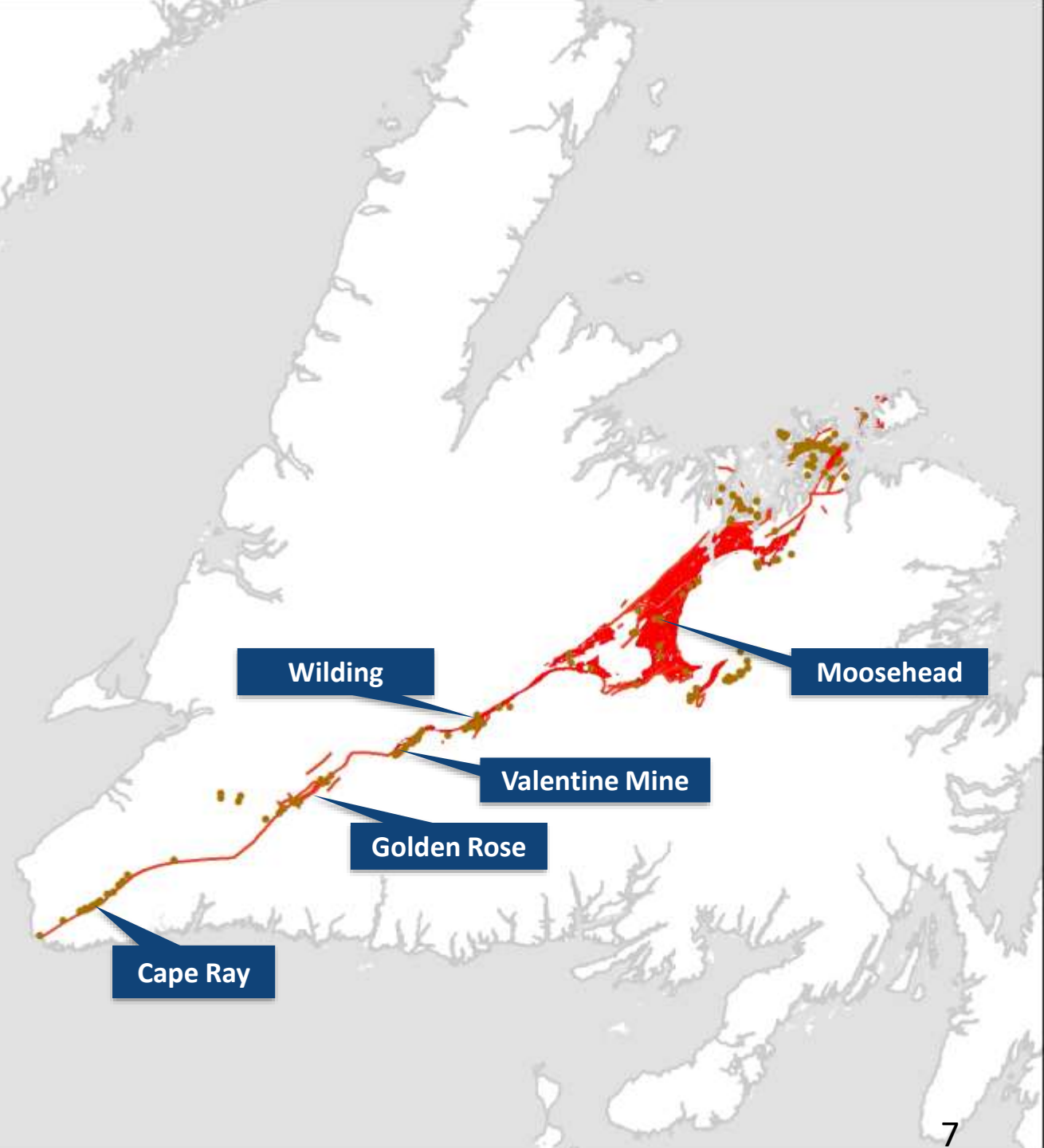
Major Players

- Canterra Minerals
- Calibre mining
- New Found Gold Corp
- Firefly Metals
- Big Ridge Gold
- Canstar Resources
- Piedmont lithium
- Benton
- Tru Precious Metals
- Sokomon Minerals
- Prospector Metals
- Matador Mining
- Golden planet
- Fair Haven Resources
- Exploits Discovery
- York Harbour
- Labrador Gold
- Maritime Resources



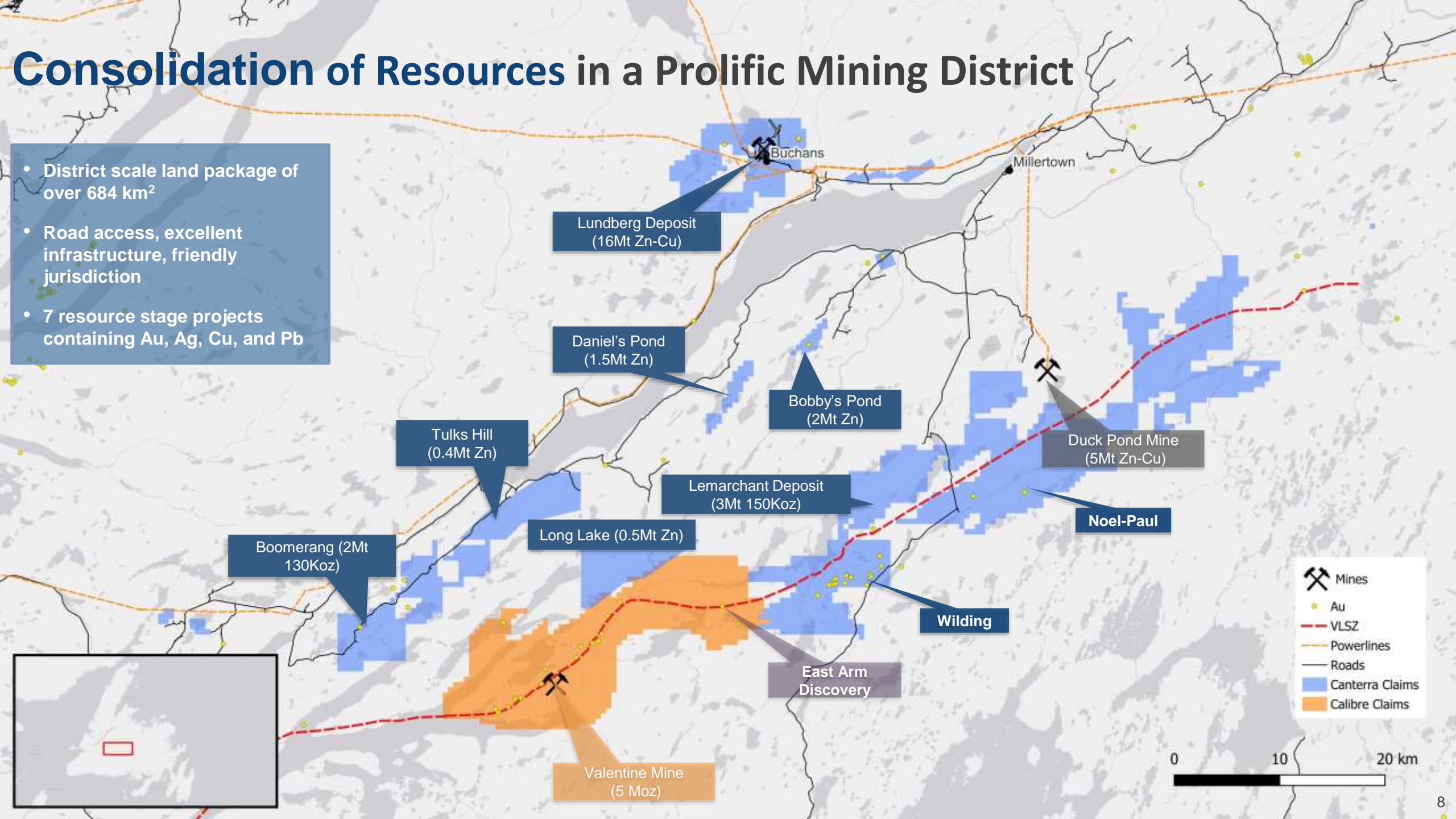
Newfoundland Opportunity

- Rogerson Structural Corridor has the same structural architecture of the world-class Archean greenstone gold belts of the Abitibi
- An emerging gold belt that encompasses Calibre Mining's Valentine gold mine and Matador Mining's Cape Ray deposit.
- Northeast-Southwest trending crustal-scale fault zone (>200 km in length)
- 7 Moz and counting
- 684km² of gold zones & targets along trend from Atlantic Canada's newest gold mine



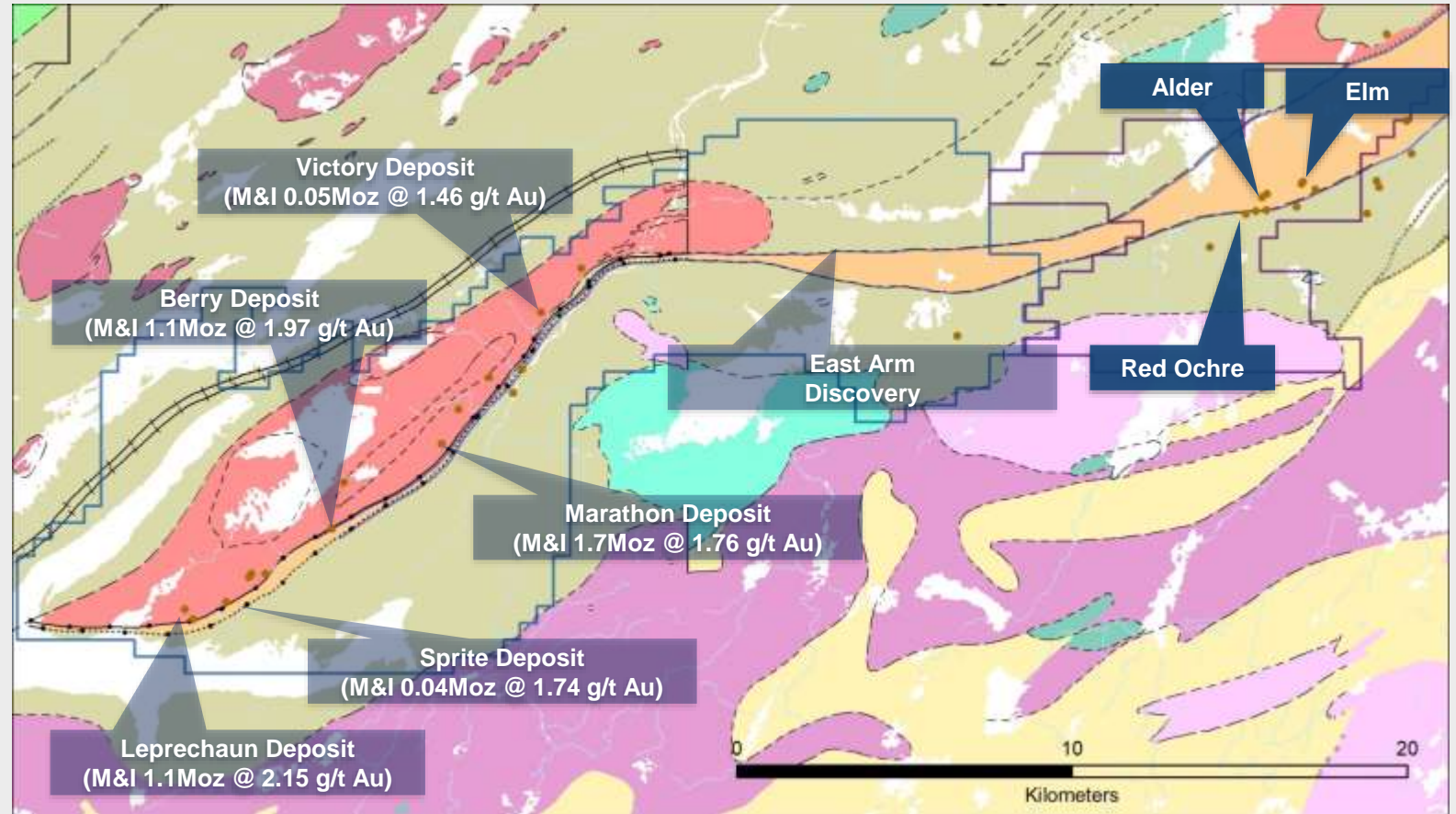
Consolidation of Resources in a Prolific Mining District

- District scale land package of over 684 km²
- Road access, excellent infrastructure, friendly jurisdiction
- 7 resource stage projects containing Au, Ag, Cu, and Pb



Calibre Mining's Valentine Mine (5.1Moz Au)⁽¹⁾

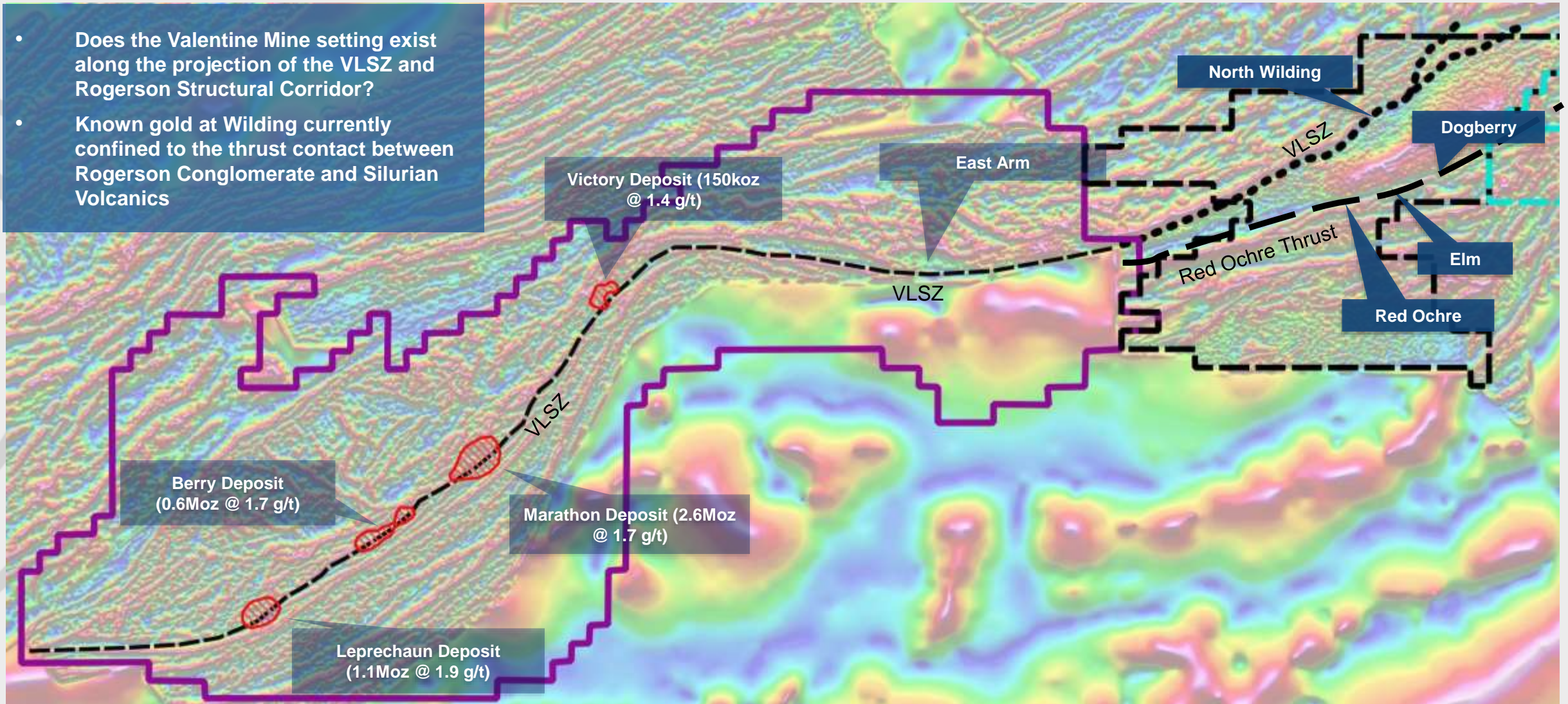
- Newest Gold Mine in Atlantic Canada
- 1st pour expected H1 2025
- Five deposits defined to date on 20km trend – 4.0Moz M&I (1.90g/t Au) and 1.1Moz Inferred (1.65 g/t Au) (initial resource, ~200koz in 2015)
- New discoveries still being made every year (Berry Zone, East arm, Frank Zone, Western Peninsula, repeater hill 2019-2024)
- Same structural setting and geology at Wilding
- Wilding claim block encompasses VLSZ and Rogerson Structural Corridor directly along strike from Valentine Mine



1) See Calibre Mining News Release November 13th, 2023 – [link](#)

Wilding and the VLSZ

- Does the Valentine Mine setting exist along the projection of the VLSZ and Rogerson Structural Corridor?
- Known gold at Wilding currently confined to the thrust contact between Rogerson Conglomerate and Silurian Volcanics

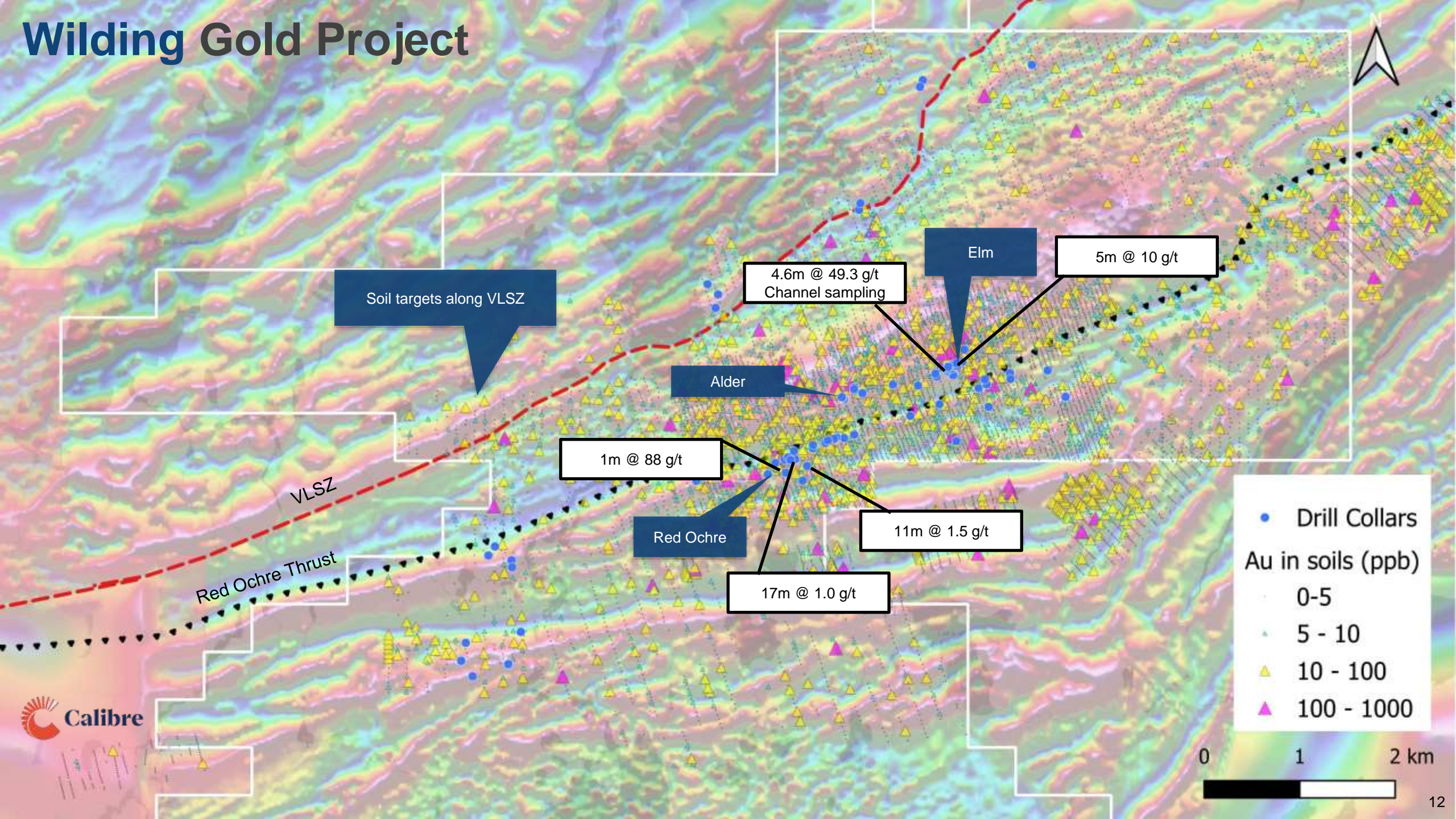


Wilding Overview

- 12,000 m drilled across 2 owners (average depth 150m)
- Detailed till sampling over Wilding claims
- Reconnaissance sampling over Noel Paul claims
- Airborne magnetics completed & interpreted
- IP survey, Lidar survey, structural studies, petrography
- Highlight drill intercepts:
 - 17m @ 1.0g/t Au (Red Ochre)
 - 42m @ 0.57g/t Au incl. 15m @ 1.01g/t (Red Ochre),
 - 0.5m @ 81.52g/t Au (Red Ochre)
 - 0.5m @ 41g/t Au (Elm Vein)
 - 5.35m @ 10g/t (Elm Vein)
 - 6.5 m @ 3.63 g/t Au incl. 1.2m @ 18.66g/t Au (Elm Vein)
 - 2.6m @ 3.6g/t Au (Alder Vein)
- Canterra holds ~60km strike of RLC, only tested ~2km
- Reconnaissance prospecting shows promising results along other ~60km



Wilding Gold Project



Soil targets along VLSZ

4.6m @ 49.3 g/t
Channel sampling

Elm

5m @ 10 g/t

Alder

1m @ 88 g/t

Red Ochre

11m @ 1.5 g/t

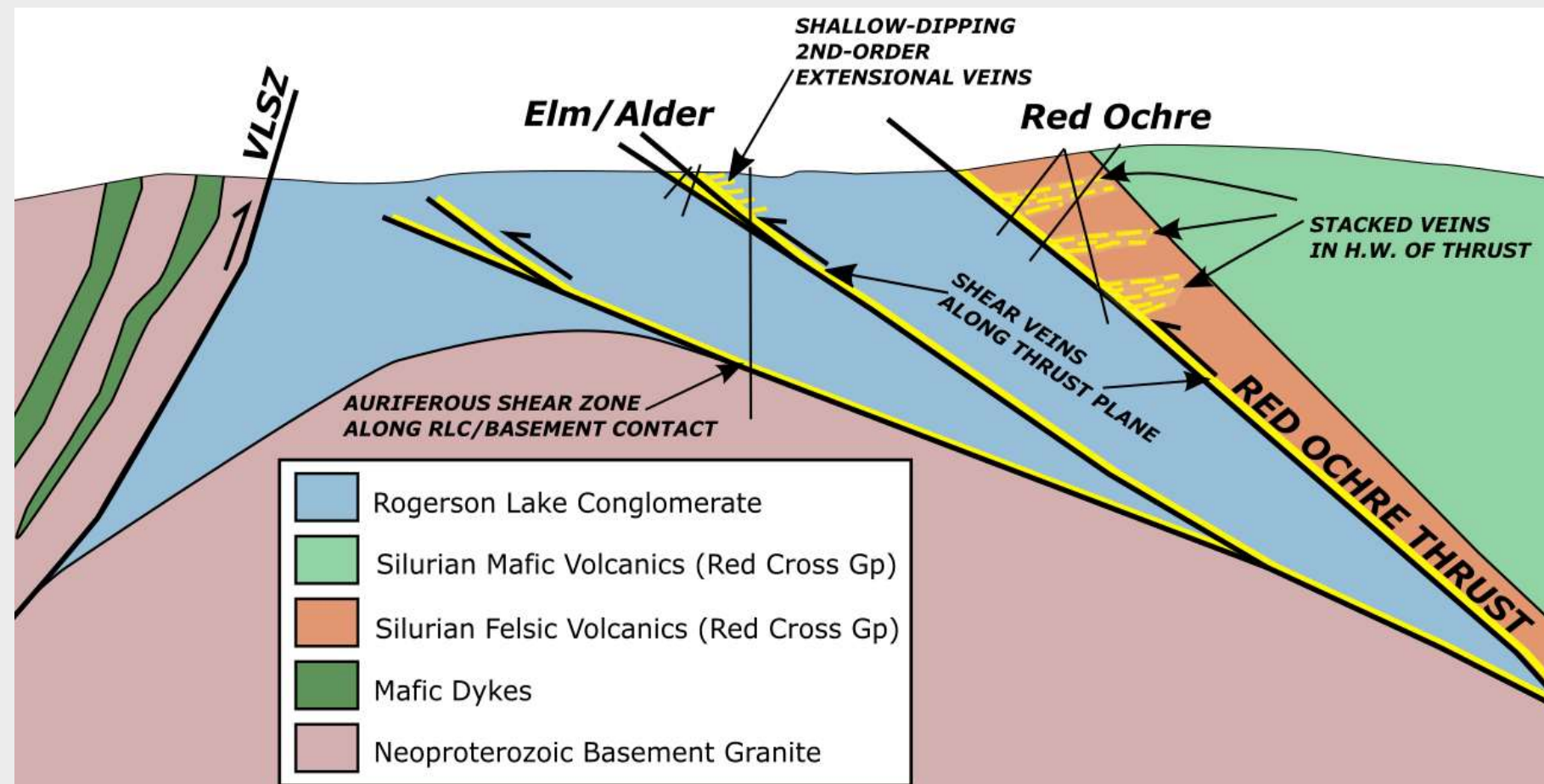
17m @ 1.0 g/t

- Drill Collars
- Au in soils (ppb)
 - 0-5
 - △ 5 - 10
 - △ 10 - 100
 - △ 100 - 1000



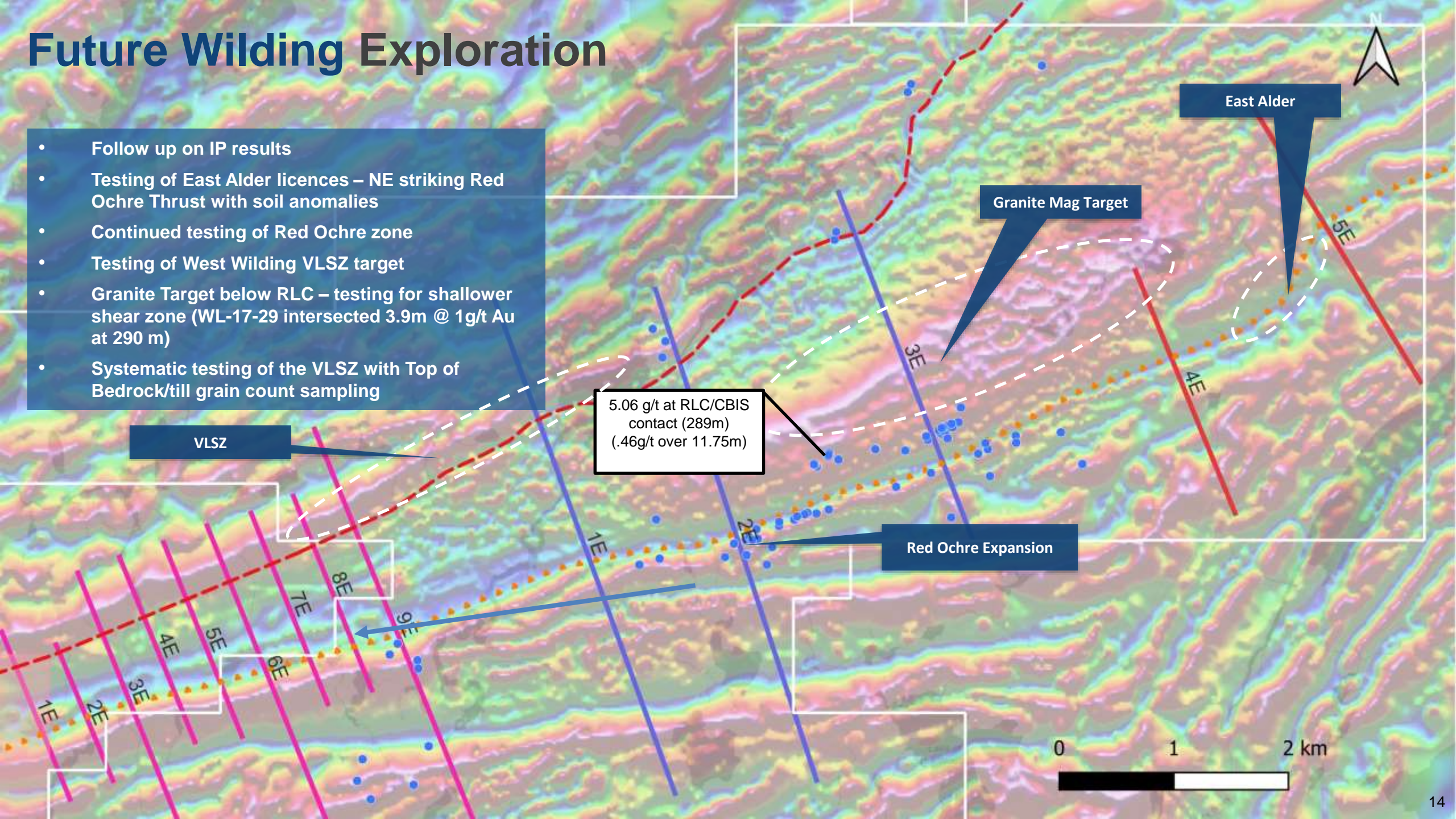
Wilding Summary of Targets Tested

- Elm/Alder – original discovery veins (2017)
- Red Ochre – drilled in 2017, possible stacked veining identified in 2021
- VLSZ – testing northern portion of Wilding in 2021
- West wilding – testing new targets in 2022



Future Wilding Exploration

- Follow up on IP results
- Testing of East Alder licences – NE striking Red Ochre Thrust with soil anomalies
- Continued testing of Red Ochre zone
- Testing of West Wilding VLSZ target
- Granite Target below RLC – testing for shallower shear zone (WL-17-29 intersected 3.9m @ 1g/t Au at 290 m)
- Systematic testing of the VLSZ with Top of Bedrock/till grain count sampling



Exploration 2024

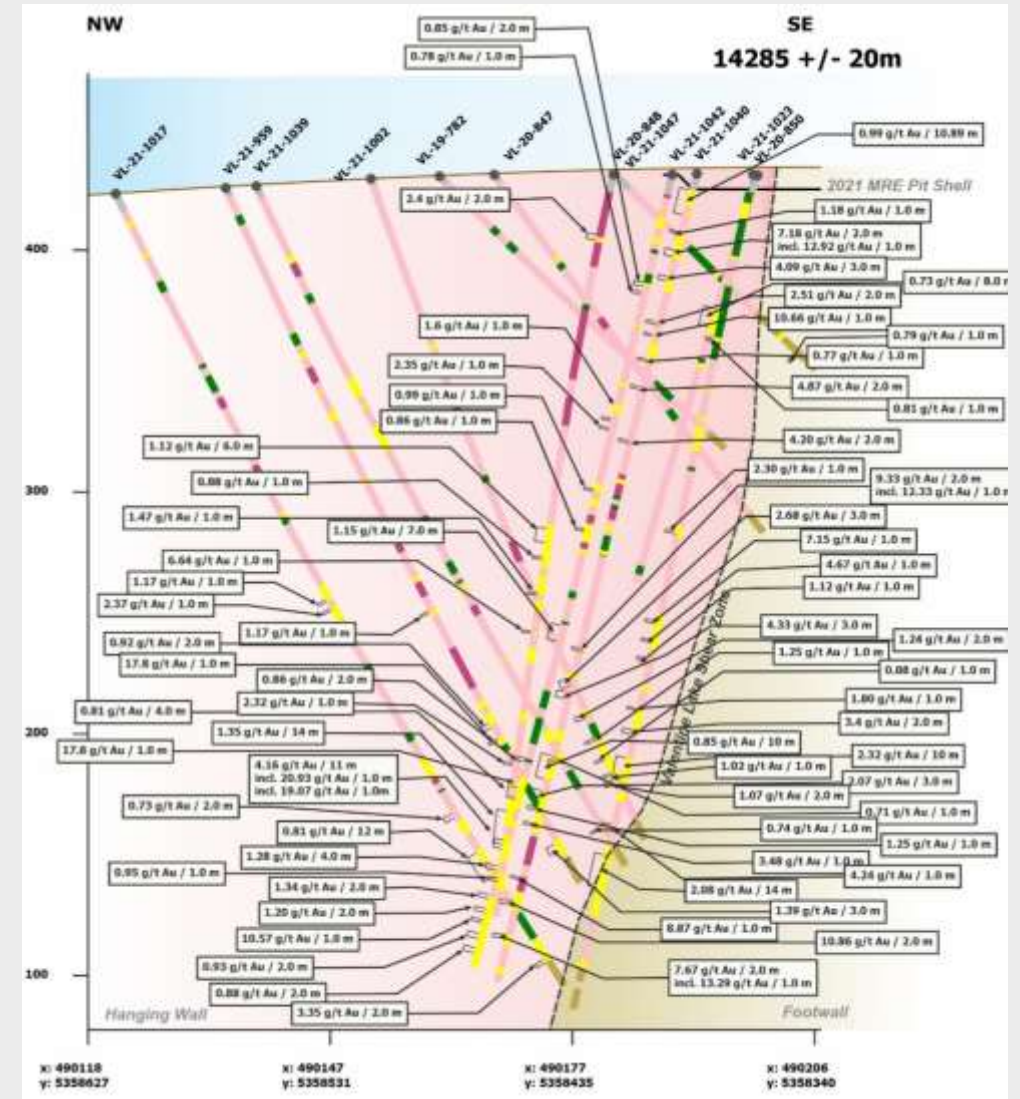
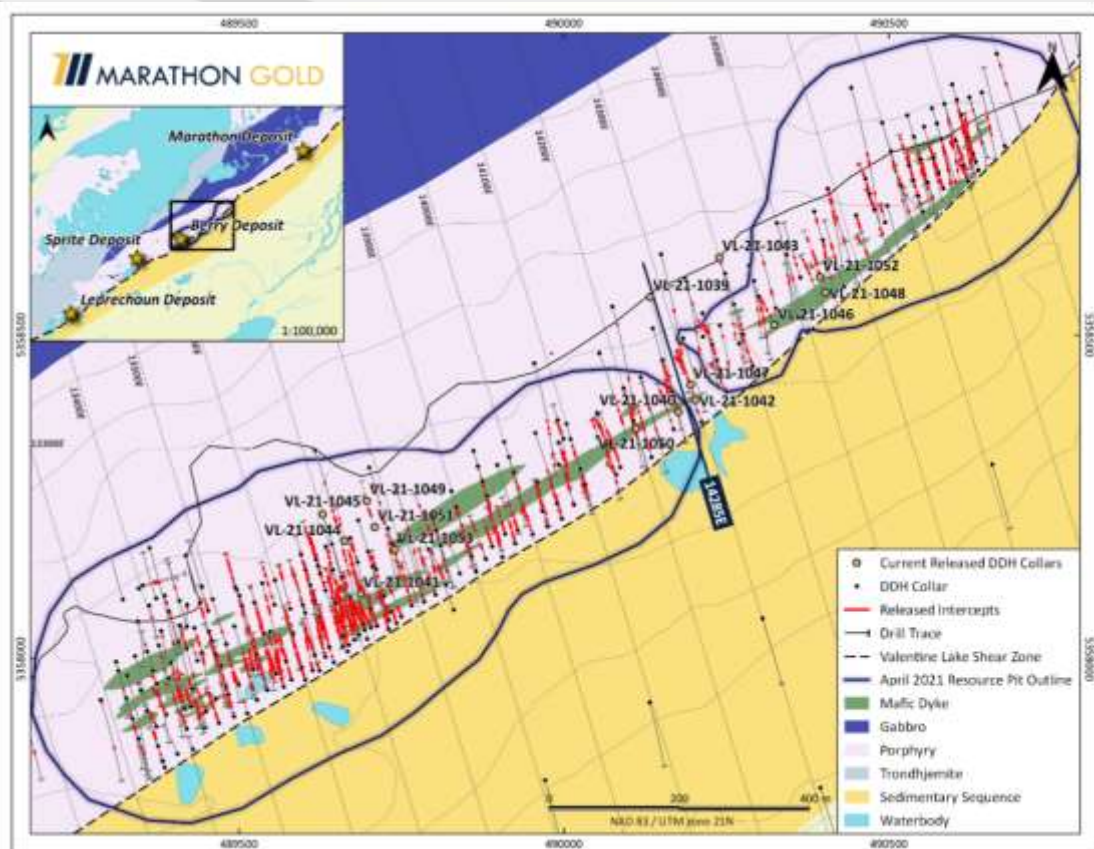
- Belt-scale targeting for orogenic gold systems on our 60km of the VLSZ
- \$0.50 M Till-gold grain survey 100m spacing (~400 samples)
- \$0.25 M Prospecting/geology
- \$2.00 M follow-up trenching/drilling (~5,000 m)
- \$3.00 M



Appendix

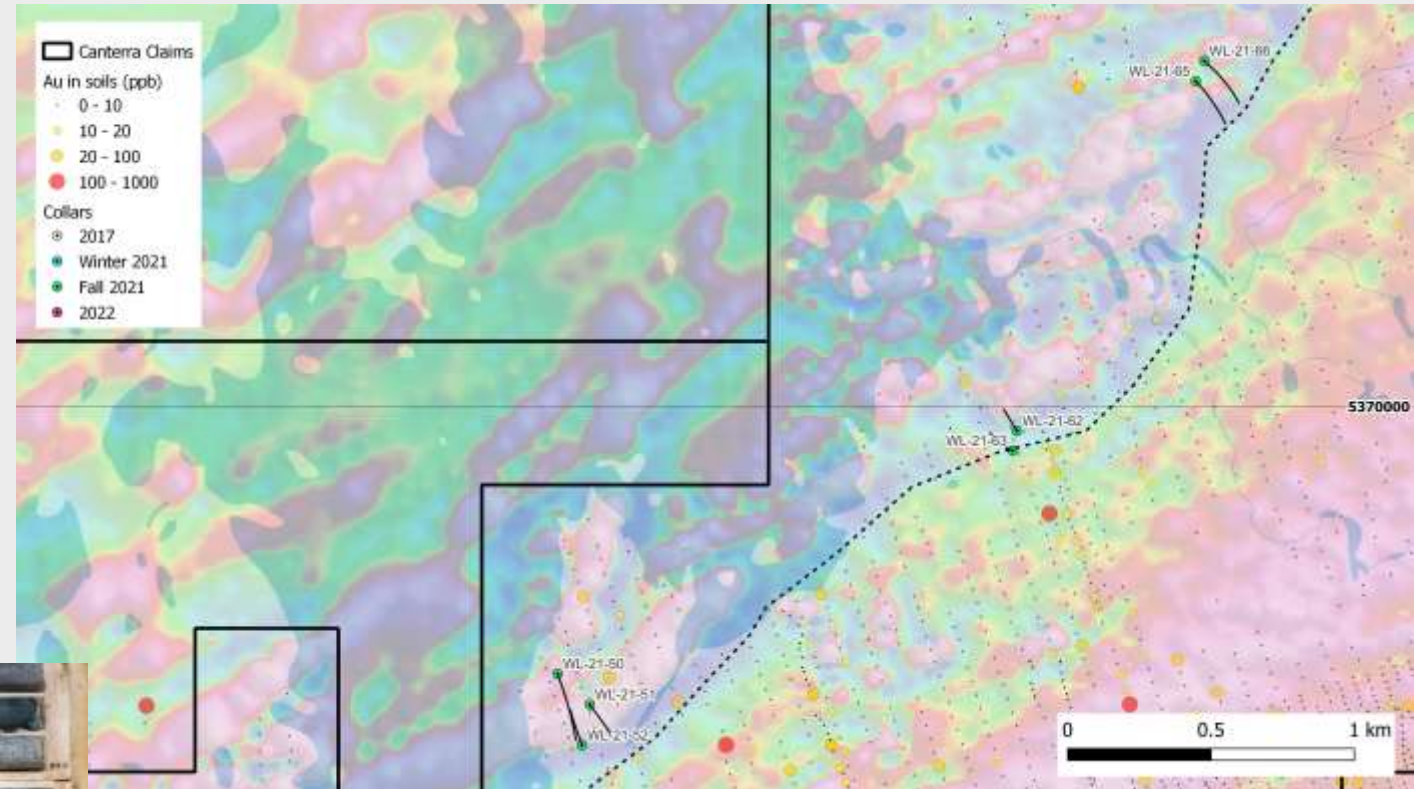
VLSZ Targets

- Drilling the VSLZ at Marathon uses low angle holes to map the VSLZ
- Followed by steeply dipping holes oriented to the Northwest to intersect extensional vein sets



VLSZ

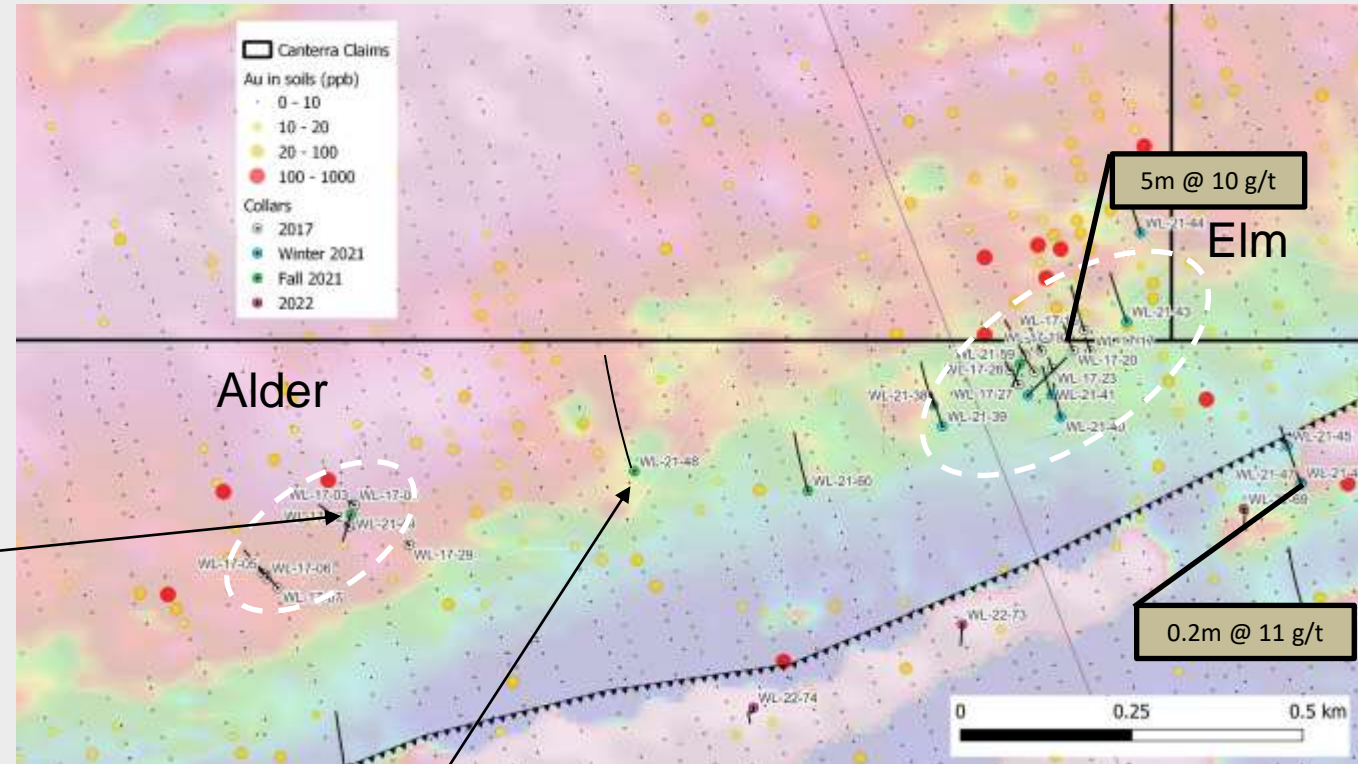
- VLSZ identified using mag data, corresponds to several Au soil anomalies
- Initial drilling planned towards SE across inferred VLSZ to confirm contact
- Follow-up drilling aimed to intersect extensional vein sets with steeply NE-dipping holes
- First holes drilled on peninsula confirm VLSZ dipping steeply to N, with granites and mafic dykes sheared against Rogerson Lake Conglomerate, but no Au



Elm & Alder Veins

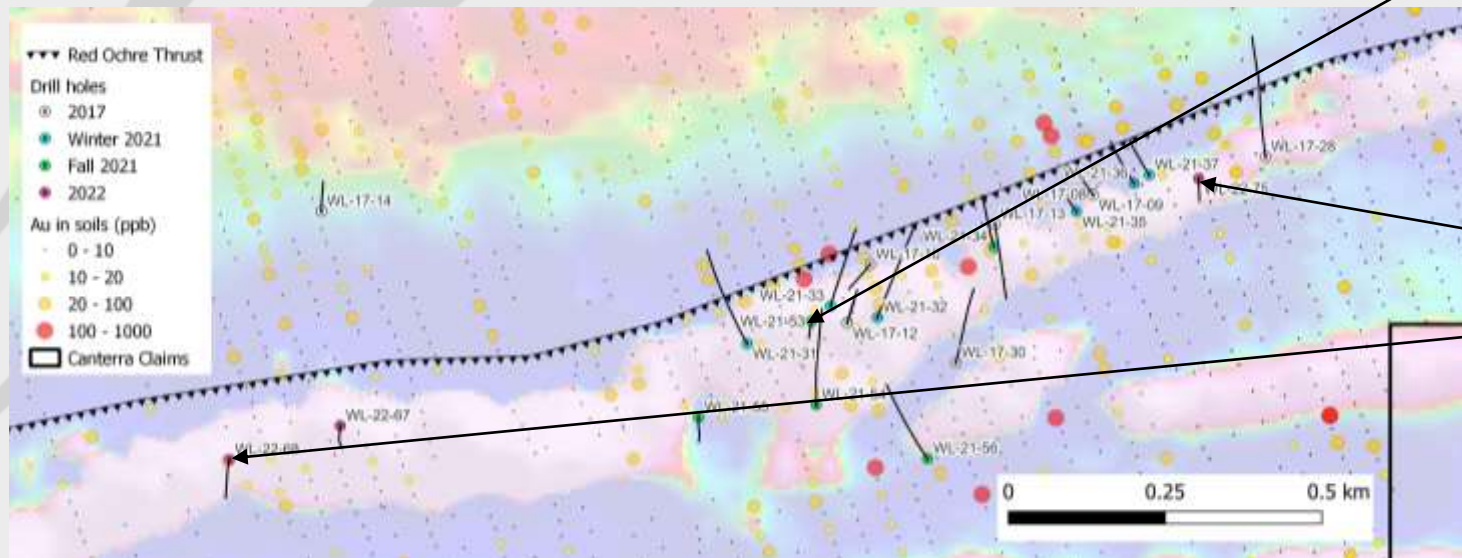
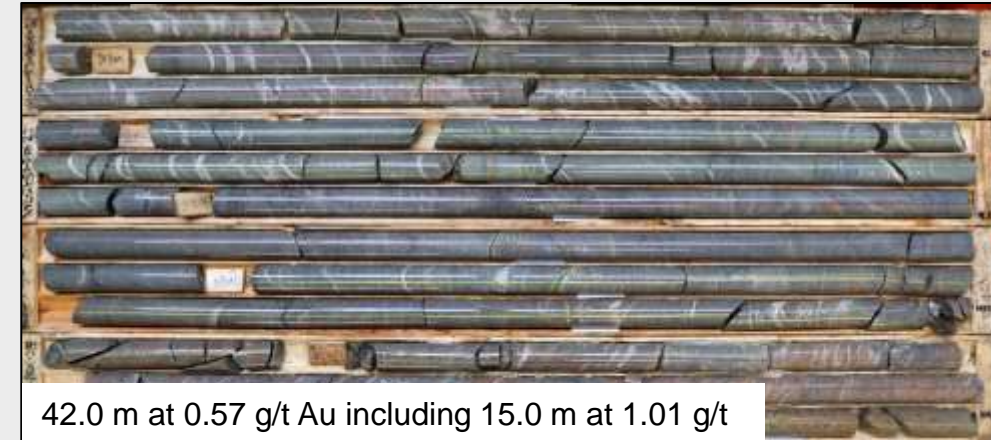
- Elm & Alder Vein systems remain targets for expansion & improved understanding
- Fall 2021 holes to test continuity between 2 systems & the potential for sub-horizontal 2nd order veins that may host Au
- Hole WL-21-48 (400m step-out) successful
- Several veins identified at each zone, new veins identified at Alder

		From	To	g/t Au
WL-21-49	Alder	21	24	1.00
		34.5	34.9	1.71
		78	78.6	5.64
		83.2	83.8	1.86
		88.2	90	2.02



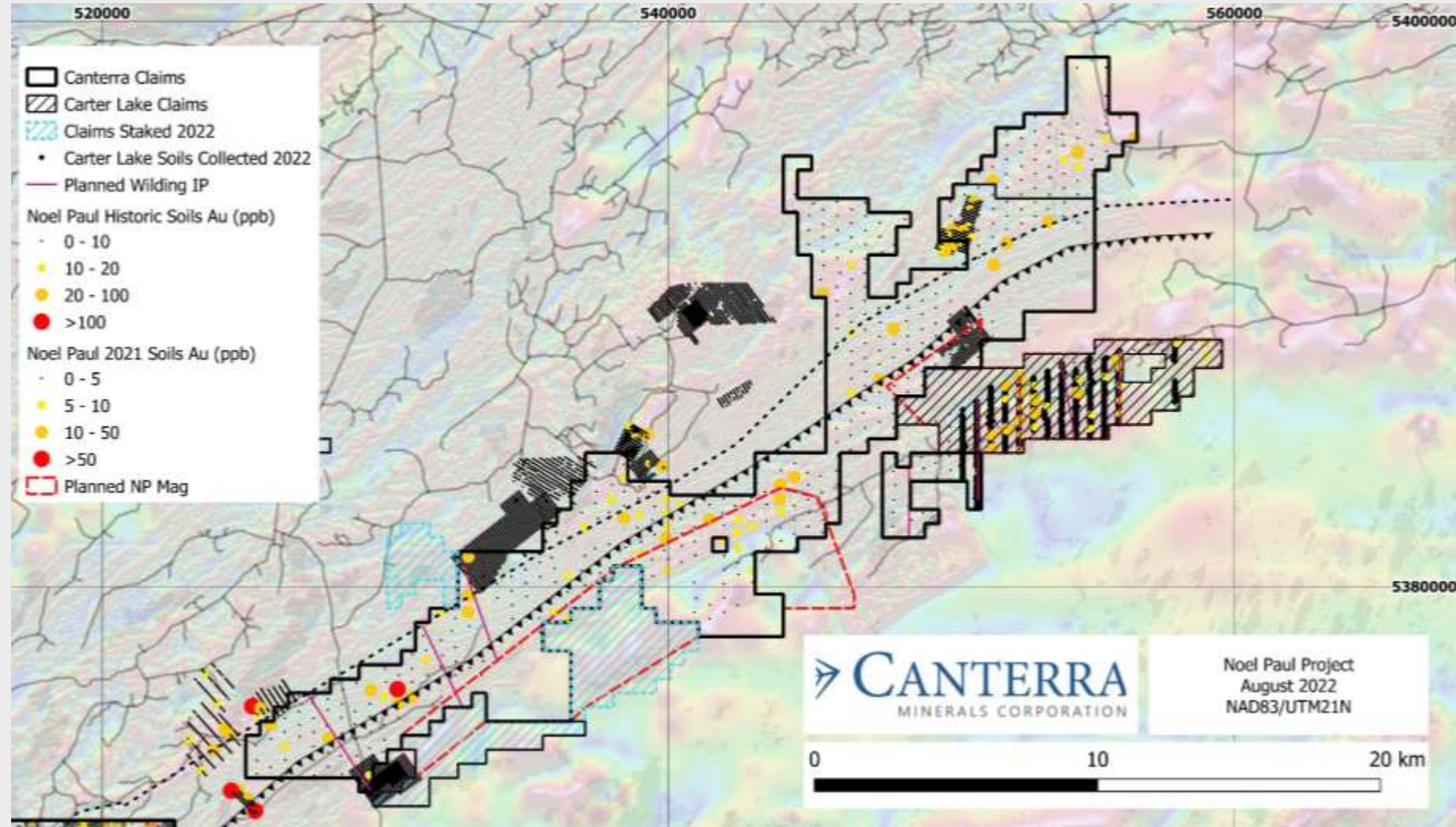
Red Ochre

- Drilling to expand mineralization and understand vein orientations and controls on mineralization.
- 2021 Holes stepping out in various directions to test extensions to W, S and SE - WL-21-53 intersecting subhorizontal veining
- 2022 holes – far west step outs (WL-22-67 & WL-22-68) show shallow veining but no Au grade. WL-22-75 to east shows stacked veining with Au.



Noel Paul

- 225 km² - approximately 3x the area of Wilding
- Continuation of RLC to NE
- Largely unexplored
- Reconnaissance sampling completed
- 2022 airborne mag survey
- 2022 soils collected over Carter Lake
- 2022 IP Survey



Gold Properties Overview

- Located along a continental collision margin formed as part of the Appalachian Orogeny – the collision of Laurentia with Gondwana and its micro-continents (Ganderia and Avalonia)
 - The Dog Bay Line (DBL) is a major suture formed by the closing of the Iapetus Ocean and can be found on both sides of the Atlantic Ocean
 - Orogenic gold environments form along continental collision margins, where major regional-scale deep-seated structures develop
 - Rogerson Lake Conglomerate (RLC) marks a major crustal structure, gold deposits located along this belt
- History:
 - 2015-2016: Discovery of quartz boulders, staking, sampling and prospecting by Altius
 - 2016-2017: Antler Gold option property from Altius. Prospecting, soil sampling, magnetic surveys, trenching, drilling & discovery of Alder & Elm veins, Red Ochre Complex
 - 2021-2024: Acquisition of ground by Canterra (options from Altius & Sokoman, plus staking) – additional drilling, sampling & prospecting
- 12,605 m drilled (84 holes) over 4 programs – 2,600 m drilled in 2017, 10,006 m drilled in 2021 & 2022
- Detailed till sampling over Wilding claims
- Reconnaissance sampling over Noel Paul claims
- Airborne magnetics completed & interpreted
- IP survey, Lidar survey, structural studies
- Highlight drill intercepts:
 - 17m @ 1.0g/t Au (Red Ochre)
 - 42m @ 0.57g/t Au incl. 15m @ 1.01g/t (Red Ochre),
 - 0.5m @ 81.52g/t Au (Red Ochre)
 - 0.5m @ 41g/t Au (Elm Vein)
 - 5.35m @ 10g/t (Elm Vein)
 - 6.5 m @ 3.63 g/t Au incl. 1.2m @ 18.66g/t Au (Elm Vein)
 - 2.6m @ 3.6g/t Au (Alder Vein)
- Canterra holds ~50km strike of RLC, only tested ~2km
- Reconnaissance prospecting shows promising results along other ~70km